

Fordham Law School

FLASH: The Fordham Law Archive of Scholarship and History

Lincoln Center, 140 W 62 (1961-present)

Buildings

1-1-1983

Law School Update, Vol. I No. 3

Office of Institutional Advancement, Fordham Law School

Follow this and additional works at: http://ir.lawnet.fordham.edu/lc_140w62st

Recommended Citation

Office of Institutional Advancement, Fordham Law School, "Law School Update, Vol. I No. 3" (1983). *Lincoln Center, 140 W 62 (1961-present)*. Book 51.

http://ir.lawnet.fordham.edu/lc_140w62st/51

This Article is brought to you for free and open access by the Buildings at FLASH: The Fordham Law Archive of Scholarship and History. It has been accepted for inclusion in Lincoln Center, 140 W 62 (1961-present) by an authorized administrator of FLASH: The Fordham Law Archive of Scholarship and History. For more information, please contact tmelnick@law.fordham.edu.

Library

Development

LAW SCHOOL UPDATE

Volume I Number 3

January 1983

Prepared by the Institutional Advancement Office for the Fordham School of Law

LAW SCHOOL BUILDING CAMPAIGN LAUNCHED

The Law School's \$6.8 million Building Campaign was announced by the Rev. James C. Finlay, S.J., University President, and Dean John D. Feerick at a reception in the Law Library on November 3rd.

Dean Feerick stated that the construction, the first since the Law School moved to Lincoln Center in 1961, "is being undertaken solely to meet the needs of the current student population, not to increase enrollment."

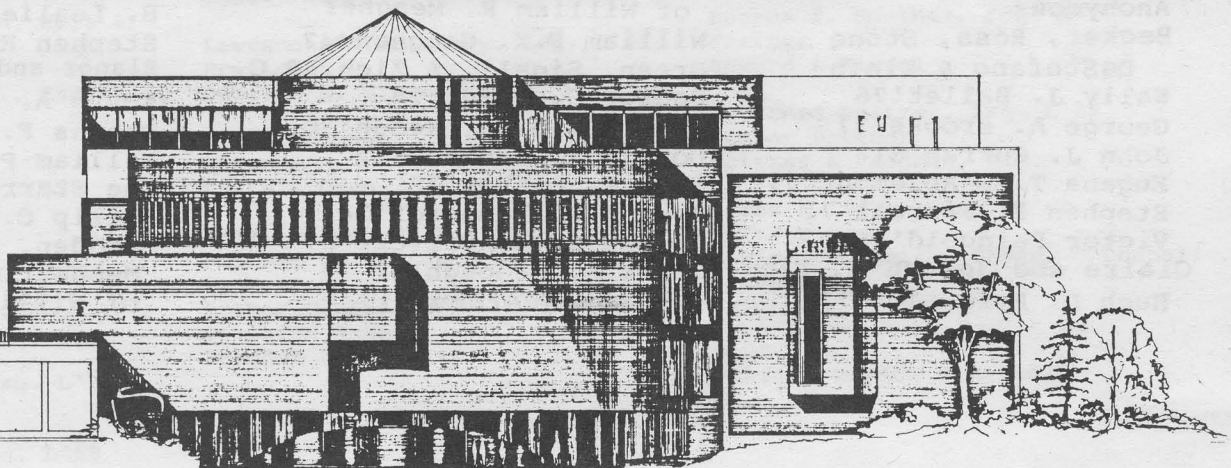
Father Finlay assured the alumni, students and faculty at the reception that the upgrading and expansion of the Law School building was the University's number one priority.

The University has since committed \$1,000,000 of its limited

financial resources to the project. This money will cover the architects' fees and the initial start-up costs.

The new addition will feature a "significant" enlargement of the Law Library to include new reading rooms, study carrels and installation of technological equipment. The plans also include a 256-seat amphitheater, two 140-seat lecture halls, twenty faculty offices, a cafeteria with a capacity for 300 students, a student lounge and a larger reception-lounge area.

The expansion which almost doubles the space of the School has been designed by the New York architectural firm of Wank Adams Slavin Associates.



EAST ELEVATION

LOOKING WEST FROM COLUMBUS AVE.